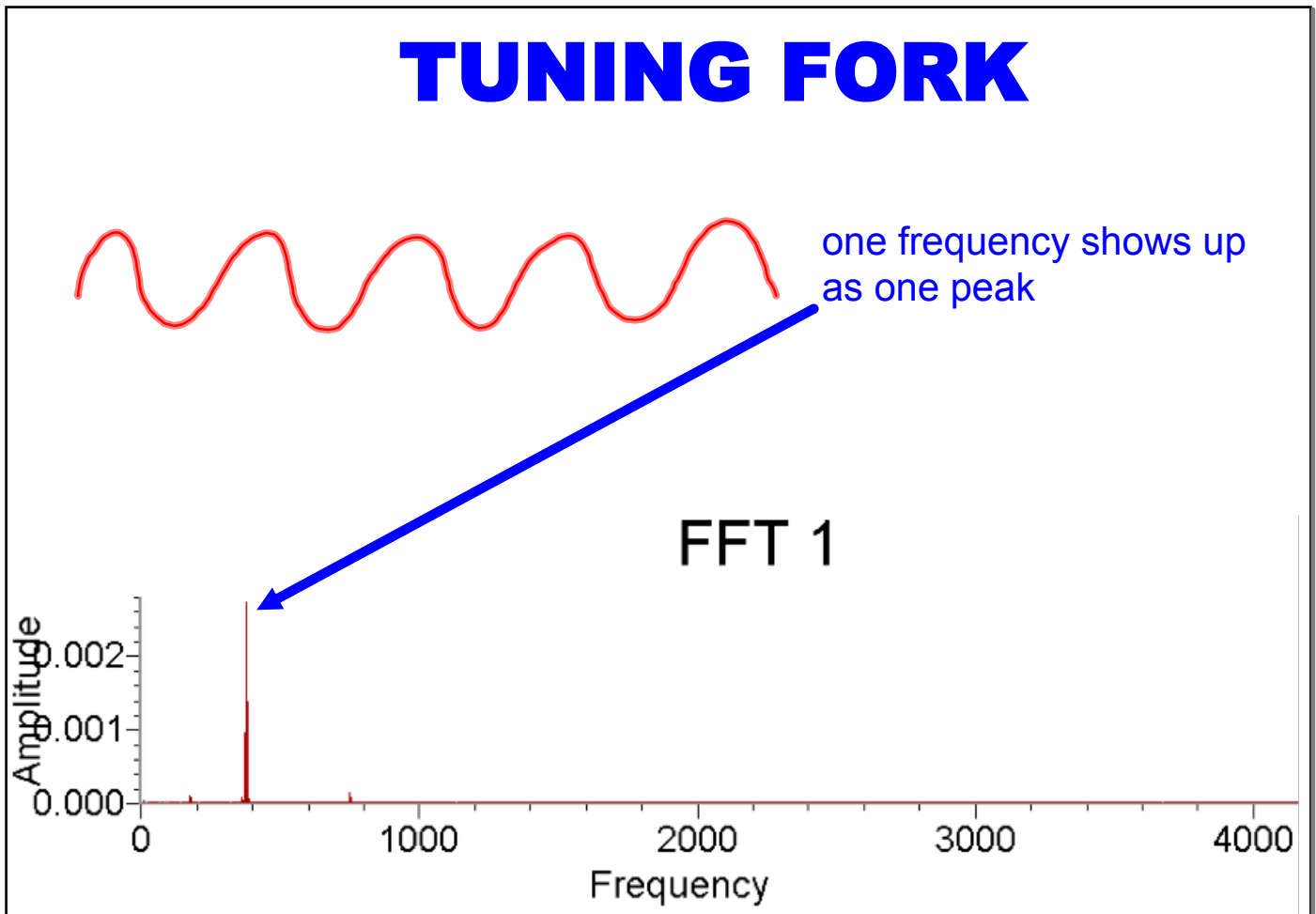
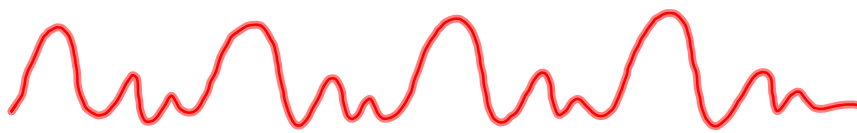


# TUNING FORK

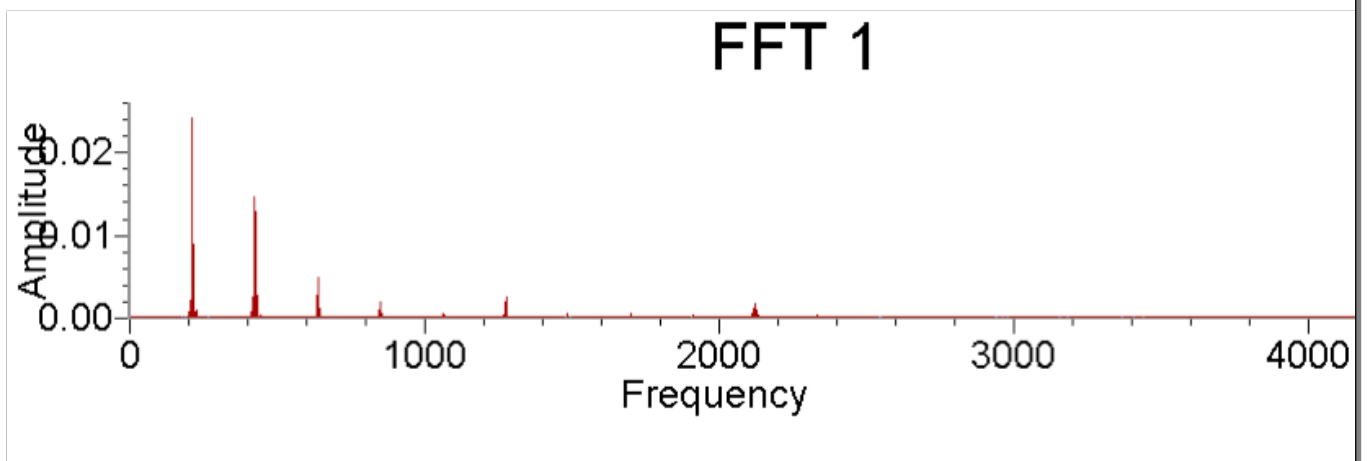


The height of the peak indicates how loud that frequency was

# Musical Note



This kind of repeating pattern is actually a mix of many sine curves



Each peak is one frequency in the mix; the height indicates how loud each one is.

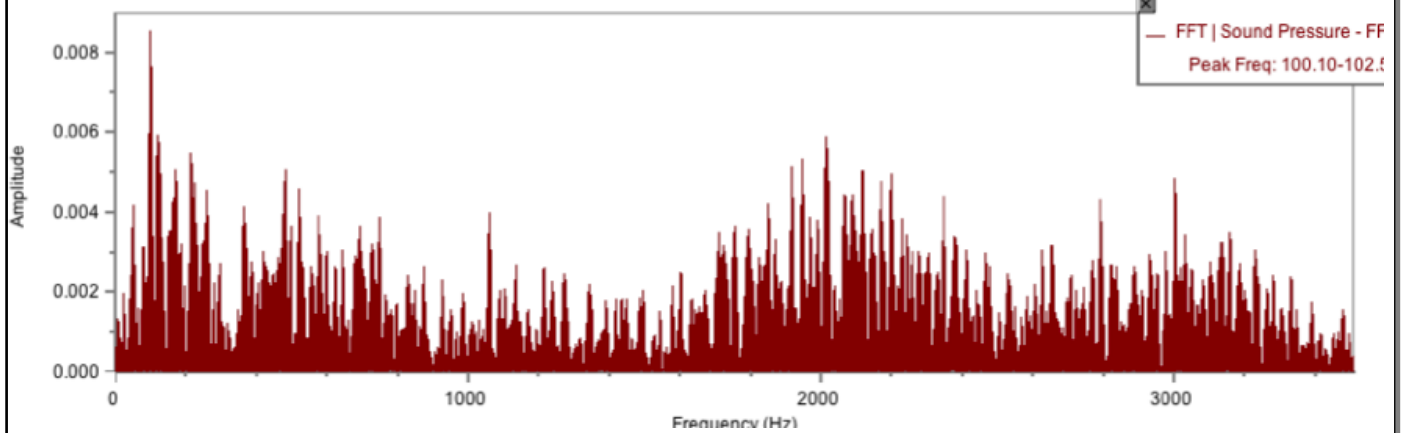
Musical sounds have clear patterns of peaks

# Noise

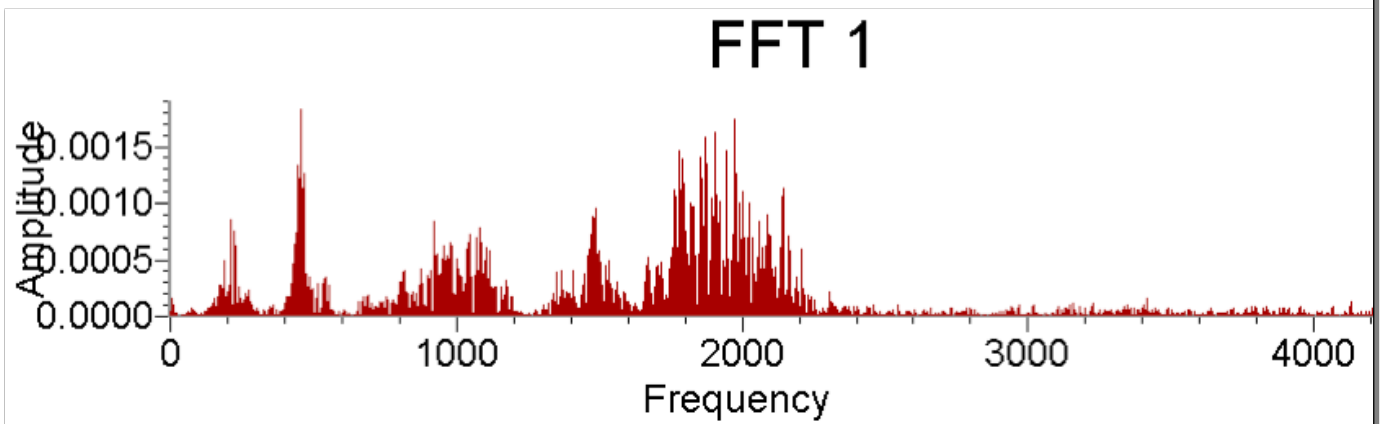


Noise is a mix of many frequencies with no pattern

FFT 1



# Human Scream



Looks like noise, but mostly around the natural frequency of the ear (giving you the best chance of being heard)